

INTERMEDIATE MODELS 475 SERIES

The 475 is an ideal step-up instrument, perfect for bringing the best out of advancing students. With a design based upon the Pro and Custom saxes, it shares many of their features, including highly accurate intonation, warm tone, and a quick response. The 475 is easy to sound great on! It is lightweight yet durable, and comes with a classic 62 style neck for optimum sound and playability. It also comes with an attractive, highly protective case, and a convenient shoulder strap.



Intermediate
YAS-475 (Alto)

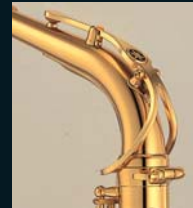
- Front F mechanism
- With high F# key

Intermediate
YTS-475 (Tenor)

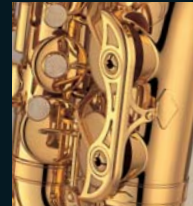
- Front F mechanism
- With high F# key



The extremely durable lightweight case includes a convenient shoulder strap.



The all-important neck has been redesigned and has been annealed for better tone and response.



The separated key guard features adjustable screw cap stoppers for a pro model appearance.



The left-hand seesaw key (B \flat) has been redesigned to facilitate playability as well as feel more comfortable.

STANDARD MODELS 275 SERIES

Yamaha's 275 series saxes offer a perfect introduction to the saxophone. They are the entry level saxes preferred by teachers throughout the world. They are also ideal for advanced players needing a doubling instrument. Offering surprisingly high-quality features at a student model price, they boast durability, good tone, good tuning, easy playability, and perfect consistency.



Standard
YAS-275 (Alto)

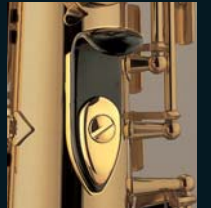
- Front F mechanism
- With high F# key

Standard
YTS-275 (Tenor)

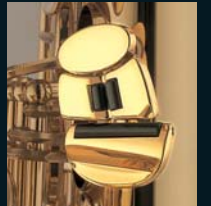
- Front F mechanism
- With high F# key



The attractive case is made of highly protective yet lightweight and durable ABS resin. The unique design permits stacking for easy storage.

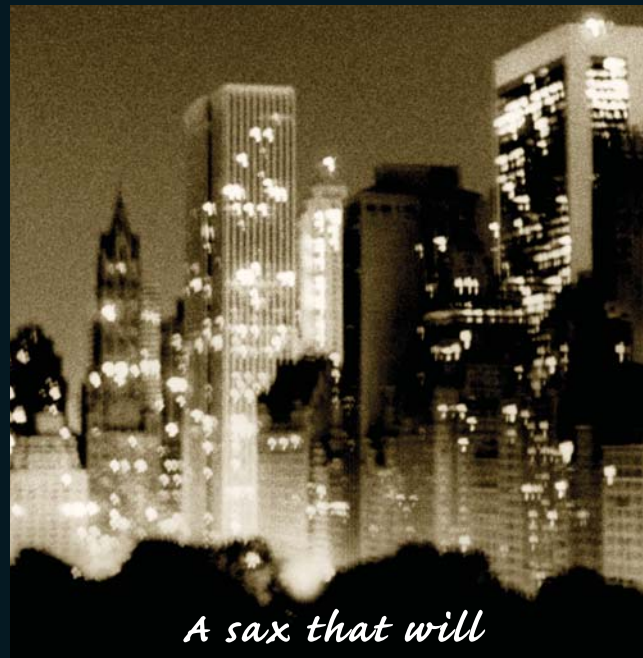


All Yamaha saxes feature an adjustable thumb hook for comfort and ease of playing.

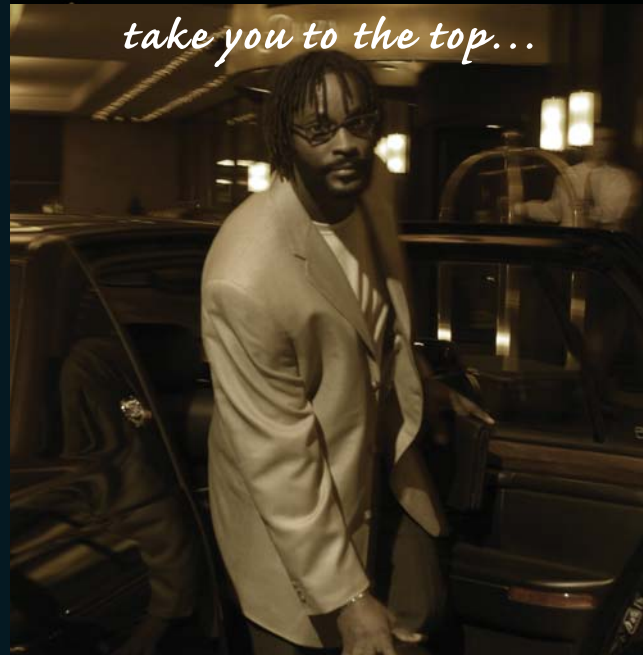


The left-hand seesaw key (B \flat) has been redesigned to facilitate playability as well as feel more comfortable.

SOPRANO SAXOPHONES
**YSS-875EX,
 675 and 475II**



*A sax that will
 take you to the top...*



The YSS-875EX comes with both straight and curving necks to accommodate individual playing preferences.

Custom
YSS-875EX

- Front F mechanism
- With high F# key

Yamaha Custom EX sopranos are an improved version of the classic YSS-875, already considered by many to be the finest soprano saxes ever made. The new design with its G2 neck offers even broader expressive capabilities with wide dynamics, precise intonation, and a gorgeous sound with rich harmonics. The YSS-875EX comes with two necks—one straight and one curving—to suit different playing preferences.



These saxes come in deluxe ultra-lightweight cases which provide excellent protection. A convenient carrying strap is also included.



The 675 is available with either straight (YSS-675) or curving (YSS-675R) necks.

Professional
YSS-675

- Front F mechanism
- With high F# key

The YSS-675 soprano saxes feature a design incorporating many of the innovations found in the Custom series. They offer a clear focused tone and excellent playability, as well as extremely accurate intonation and comfortable response. Two different neck configurations are available, straight or curved, to suit players' preferences.



Intermediate
YSS-475II

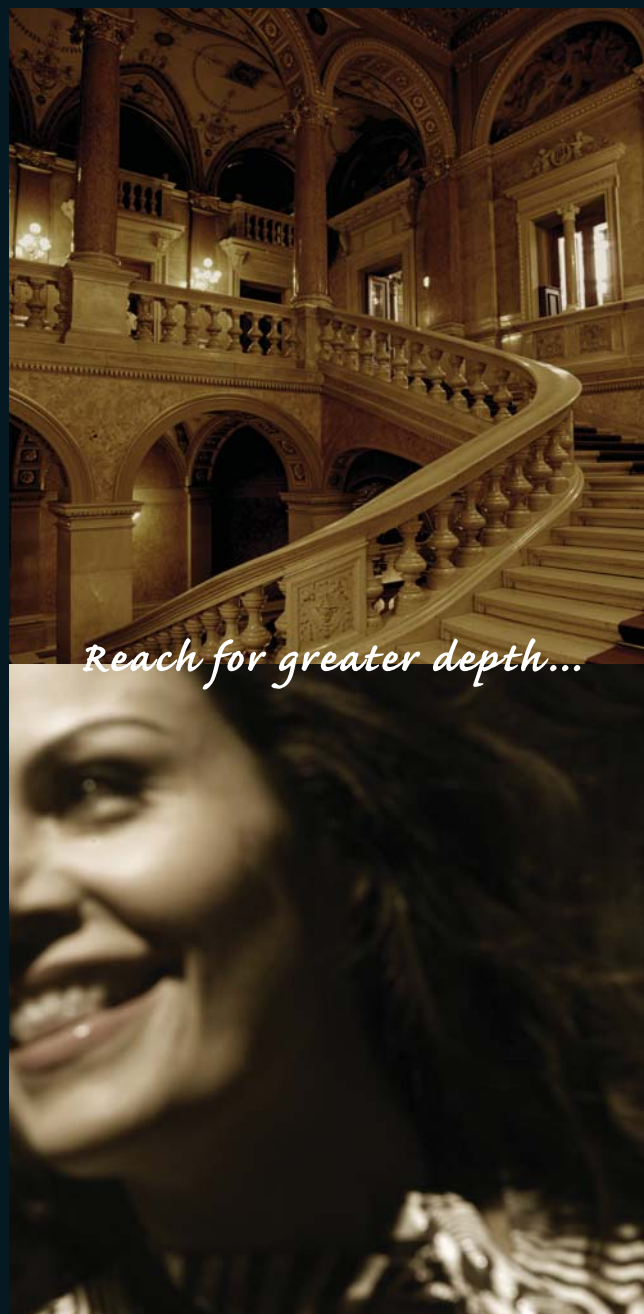
- Front F mechanism
- With high F# key

The YSS-475II delivers professional qualities at an intermediate price. Much of its design is based upon the Custom EX saxes, and it shares many of the same features. The 475II offers outstanding response, tone, and intonation, as well as a comfortable playability.



The 475II saxes come in deluxe ultra-lightweight cases which provide excellent protection. It includes shoulder straps for easy transport.

BARITONE SAXOPHONES YBS-62 and 32



Reach for greater depth...



Professional YBS-62

- Front F mechanism
- With high F# key

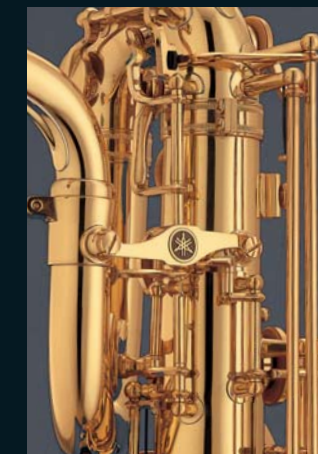
Yamaha's 62 series saxes have become modern classics, used by leading professional players worldwide. Their strong clear sound, and excellent playability have set new standards in professional model saxophones. In addition, the 62 series saxes offer extremely accurate intonation and a comfortable response.



Intermediate YBS-32

- Front F mechanism

Yamaha's 32 series saxes offer professional qualities at an intermediate price. Much of their design is based upon the more expensive Pro and Custom saxes, and they share many of the same features. The 32 saxes deliver outstanding response, tone, and intonation, as well as a comfortable playability.



Yamaha baritone saxes feature a specially designed octave mechanism for ease of play and smooth octave transitions.

Want to Sound Different???

—ST5 Digital Effects System For Wind Instruments—



Want your sax to sound like a rock guitar? How about a tuba? Want to play higher—or lower—than normally possible? Maybe double your sound at an octave? The possibilities are almost infinite! The innovative ST5 uses powerful digital processors to twist and shape your tone for unlimited creativity whether you're playing at home, in a recording studio, or performing on-stage.

32 Effects

A range of 32 high-resolution digital effects including reverbs, delays, distortion, pitch change, modulation, dynamics and 4-band EQ can be used — up to 6 at a time — to alter and enhance your sound.

Metronome & Tuner

The built-in "metronome" is more than a mere timekeeper. In addition to basic click-type metronome patterns, the ST5 offers a selection of complete rhythm patterns using realistic drum sounds to make practicing more interesting and enjoyable. There's also a precision tuner built-in.

50 Presets & 50 User Programs

50 preset effect programs are provided, and memory for 50 user programs to store your own creations. The Dynamics, EQ, Modulation, Delay and Reverb, Noise Reduction and Level processing blocks can be individually set up to produce precisely the desired effect, and each block can be turned on or off to create the required overall effect. These programs can be stored creating your own library of original sounds.

Real-Time Pitch Change

In addition to letting you to play along with music from an external source such as CD or tape, you can change the pitch of that source in real time. Simply change the pitch to a key that's comfortable for you to play in, or shift to a variety of keys to build your transposing skills.

Phrase Trainer

You can record phrases up to 16 seconds in length, either from the auxiliary input or your own instrument. The recorded phrases can then be played back repeatedly, and slowed down without changing the pitch. The ST5 Phrase Trainer is a very useful practice tool.

MC7 Wind Instrument Microphone

The MC7's frequency response of 50Hz-15kHz makes it perfect for use with wind instruments. This high-quality microphone accurately reproduces the tone of the instrument, while two "non-marring" clips ensure easy attachment. With its flexible neck the MC7 can be precisely placed for optimum pick-up, and a specially designed attachment system isolates the microphone from sounds produced by the key mechanics.



Mouthpieces

Yamaha Custom saxophone mouthpieces are sculpted out of choice ebonite, a high quality hard rubber which offers a deep resonance and tonal qualities similar to those of natural wood. The Standard series are made out of high quality phenol resin and feature a design based upon the top grade Custom series. The facing of the Standard mouthpieces is slightly shorter than that of the Custom series making them easier to play, and easier for beginning students to achieve a rich sound.



Custom Series

Standard Series

Custom Mouthpieces

Model		3CM	4CM	5CM	6CM	7CM
B \flat Soprano Saxes	Tip opening (mm)	1.20	1.25	1.30	1.35	1.40
	Facing length (mm)	19.00	19.00	19.00	19.00	19.00
E \flat Alto Saxes	Tip opening (mm)	1.60	1.70	1.80	1.90	2.00
	Facing length (mm)	23.00	23.00	23.00	23.00	23.00
B \flat Tenor Saxes	Tip opening (mm)	1.60	1.70	1.80	1.90	2.00
	Facing length (mm)	24.00	24.00	24.00	24.00	24.00

Standard Mouthpieces

Model		3C	4C	5C	6C	7C
B \flat Soprano Saxes	Tip opening (mm)	1.15	1.20	1.25	1.30	1.35
	Facing length (mm)	19.00	19.00	19.00	19.00	19.00
E \flat Alto Saxes	Tip opening (mm)	1.50	1.60	1.70	1.80	1.90
	Facing length (mm)	23.00	23.00	23.00	23.00	23.00
B \flat Tenor Saxes	Tip opening (mm)	1.60	1.70	1.80	1.90	2.00
	Facing length (mm)	24.00	24.00	24.00	24.00	24.00
E \flat Baritone Saxes	Tip opening (mm)			2.10		
	Facing length (mm)			28.00		

Customize Your Sax

Everyone is a little different. Everyone looks different, talks different, and has a different taste in sound. That's why Yamaha offers so many different neck options for its Custom saxophones; just a slight change in the all-important neck of the sax can make a huge difference in how your horn feels and how you sound. Optional Custom Saxophone necks give you a choice of resistance and tone combinations. The finish of a sax neck also has a big effect on the sound. For this reason optional necks are available in gold-lacquer, silver-plate, and gold-plate finishes.



	Model	Finish		
		Gold lacquer	Silver-plated	Gold-plated
For Soprano Saxes (YSS-875EX, 875)	M1: straight	SM1	SM1S	SM1GP
	M1: curved	SM1R	SM1RS	SM1RGP
	F1: straight	SF1	SF1S	SF1GP
	F1: curved	SF1R	SF1RS	SF1RGP
	G2	SGS	SG2S	SG2GP
	G2R	SG2R	SG2RS	SG2RGP
For Alto Saxes (YAS-875EX, 82Z)	G1	AG1	AG1S	AG1GP
	M1	AM1	AM1S	AM1GP
For Tenor Saxes (YTS-875EX, 82Z)	M1	TM1	TM1S	TM1GP
	F1	TF1	TF1S	TF1GP
	G1	TG1	TG1S	TG1GP
	G3	TG3	TG3S	TG3GP

The Talent and Inspiration Behind our Saxophones

Many of the greatest artists in the world have shared their talent, experience, and dreams with Yamaha designers. It is the combined talents of both artists and artisans which forms the heart and soul of our saxophones.



■ Gary Foster

"I began playing Yamaha saxophones in 1976 and have used Yamahas exclusively in live performance and in the recording studio ever since."



■ Eugene Rousseau

"I have been performing exclusively on Yamaha Saxophones since 1972. Why? Simply because I find them to be the best: acoustically, mechanically, and artistically."



■ Jean-Yves Fourmeau

"I really enjoy playing Yamaha saxophones. I love their rich, bright sound, their quick response over the entire tonal range, their precise mechanics, and the fine craftsmanship and special care that goes into every horn. The Yamaha saxophone is my perfect playing companion."



■ George Shelby

"My saxophones must do two things: They need to play easily, and they need to have a huge sound. In my experience as a player, no other horns offer the consistency of tone, intonation, and durability of my '62's. My voice, my horns."



■ Dave Koz

"I am a huge fan of Yamaha saxophones—I've been playing on mine for years, and always seem to get everything I need out of them, especially my silver YAS-62 alto and soprano. They are my most trusted musical friends!"



■ Nobuya Sugawa

"I want my sax to 'sing' when I play. This has always been my dream. And the Custom saxes have made that dream come true. Born of a dialog between player and designer, they are helping so many discover the joy of music! Try playing one yourself. And watch where you go."



■ Otis Murphy

"Yamaha Custom Saxophones... quite simply, the finest saxophones in the world."



■ Bobby Watson

"The Yamaha custom saxophone has allowed me to raise my creative and technical potential to a new level. The ease of execution on the horn is 'state of the art.' When I play my Yamaha saxophone, I only think about what I want to play, not how I want to play it. I love the horn."



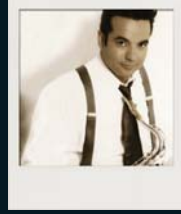
■ Lennie Niehaus

"My new Yamaha effortlessly translates the sound I have in my head to the sound that I hear. It has incredible consistency all the way up and down, and a flexibility that lets me say what I want to say—regardless of the style I'm playing in."



■ Peter Weniger

"Warmth, sincerity and elegance—words I need to describe the sound I am hearing. And these Yamaha-Saxophones help me to produce that sound, that "vibe"—my inner voice! Be sure to check them out!"



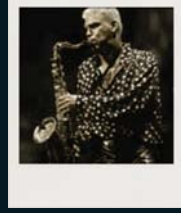
■ Frankie Perez

"I find the Yamaha saxophones to be very versatile, the intonation is great and the mechanism is the easiest. They go with me everywhere, no matter what kind of music I am playing."



■ Phil Woods

"This new Yamaha 82Z speaks so well from top to bottom that I don't need a microphone, which fits perfectly with my sound concept. When I took it into the studio there was a new kind of intrinsic beauty that I hadn't heard in my other horns. This 82Z is far, far superior."



■ Mark Rivera

"The first time I got to hold the 82Z it felt like an old friend. It plays in every register with a warm, round tone. Billy Joel's soundman Brian Ruggles came up after the show and said 'that's the one!' Thank you gentlemen, you hit it right on!"



■ Jeff Coffin

"I have been playing my new Yamaha tenor with Bela Fleck & the Flecktones for over a year now and it has stood up very well to nearly 200 dates a year. It has a beautiful, warm tone with a lot of character to the sound. It plays very evenly all the way from the bottom to the top and it's easy to play in any situation."

Specifications

B^b Sopranos

Model	Series	Auxiliary Keys	Neck	Pivot Screws	Key Buttons	Lyre Holder	Mouthpiece
YSS-875EX	Custom EX	High F [#] , front F	Curved and straight G2	Tapered with bullet head	Mother of pearl	Not included	Custom 4CM
YSS-675	Professional		Straight		Polyester	Included	4C
YSS-675R	Intermediate		Curved			Not included	

E^b Altos

Model	Series	Auxiliary Keys	Neck	Pivot Screws	Key Buttons	Lyre Holder	Mouthpiece
YAS-875EX	Custom EX	High F [#] , front F	Custom G1	New bullet head design	Mother of pearl	Not included	Custom 4CM
YAS-82Z	Custom Z		G1	Tapered with nylon head	Polyester	Included	4C
YAS-62	Professional						
YAS-475	Intermediate		Standard				
YAS-275	Standard						

B^b Tenors

Model	Series	Auxiliary Keys	Neck	Pivot Screws	Key Buttons	Lyre Holder	Mouthpiece
YTS-875EX	Custom EX	(YTS-82Z available without high F [#] key) High F [#] , front F	Custom G3	New bullet head design	Mother of pearl	Not included	Custom 4CM
YTS-82Z	Custom Z		Custom G1				
YTS-62	Professional		G1	Annealed	Tapered with nylon head	Polyester	Included
YTS-475	Intermediate	Standard					
YTS-275	Standard						

E^b Baritones

Model	Series	Auxiliary Keys	Neck	Pivot Screws	Key Buttons	Lyre Holder	Mouthpiece
YBS-62	Professional	High F [#] , front F	—	Tapered with nylon head	Polyester	Included	5C
YBS-32	Standard	Front F					

Specifications are subject to change without notice.

Finish Options for Yamaha Saxes

Changing the finish of a saxophone does more than merely alter its appearance; the color and resonance of the sound are also affected. All Yamaha saxes feature a beautiful and highly durable gold lacquer finish (275 & 32 series have a clear lacquer finish). But with the Custom saxes, other finish options are also available. The following chart will help you create a sax that's just perfect for you.

Model	Finish Options			
	Silver-plate	Gold-plate	Black lacquer	Unlacquered*
All Yamaha Saxes	—	—	—	—
Custom EX Saxes (YSS-875EX, YAS-875EX, YTS-875EX)	Silver-plate	Gold-plate	Black lacquer	—
Custom Z Saxes (YAS-82Z, YTS-82Z)	Silver-plate	Gold-plate	Black lacquer	Unlacquered*

*Unlacquered Finish

The Z saxes can be special-ordered with an unlacquered finish for pure tonal resonance and responsive playability. The surface of the sax will soon discolor from exposure to air, and also from contact with the hands and fingers—due to the acidity of the skin. The discoloration, which will be most noticeable at the skin contact points, will not affect the sound or playability of the sax, though we strongly recommend that you wipe the sax off with a clean soft rag after handling and playing in order to prevent any pitting of the surfaces.



Black Lacquer

Silver plate

Gold plate

Thumb Hook

Yamaha saxes also feature an adjustable thumb hook for enhanced playing comfort. The hook is made of soft and slightly flexible—yet extremely strong—ABS resin.



Pads

The pads are made of a special water proof design for longer life with less maintenance needed.